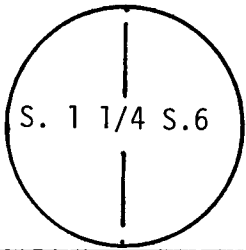


CERTIFIED LAND CORNER RECORDATION

R 65 | 64 W DESCRIPTION OF CORNER EVIDENCE FOUND, AND ORIGINAL RECORD (If known)

T
14
N



G.L.O.: 20" x 10" x 4" Limestone

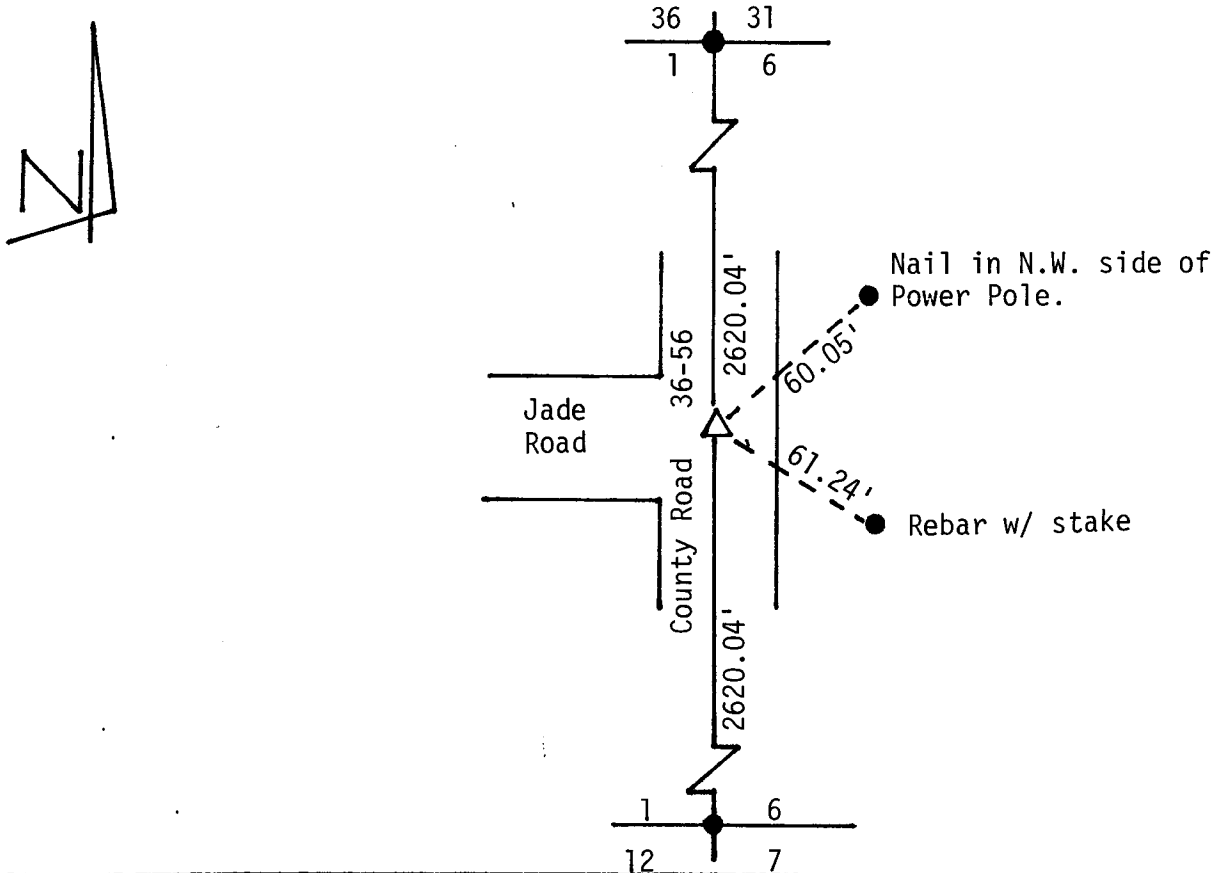
Reset with CSSA Surv Kap P.E. & L.S. 347 from reference points established by William D. Braman L.S. 566 as shown below.

DESCRIPTION OF MONUMENT AND ACCESSORIES ESTABLISHED TO PERPETUATE THE ORIGINAL LOCATION OF THIS CORNER:

CSSA Surv Kap P.E. & L.S. 347 set 5" below road surface.

See ties below

SKETCH, WITH COURSE AND DISTANCE TO ADJACENT CORNER IF DETERMINED IN THIS SURVEY.
(May Sketch or Paste Reproduction on Reverse Side.)



I, Glen L. Roberts certify that I have carefully performed or reviewed the work done on the diagrammed corner as reported on this recordation form and approve the same.

Glen L. Roberts
Signature of Surveyor

Wyo. P.E. & L.S. 347
Registration No

STATE OF WYOMING,
Office of Clerk and Recorder,
County of Laramie

622359

This "corner record" was filed for record on the _____ day of _____, 19____, was noted on the cross-index plat and is assigned page No. C-1, in book No. 14-67.

County Official

Cross Index No. _____	T. _____	R. _____	Mer. _____
_____	T. _____	R. _____	Mer. _____
_____	T. _____	R. _____	Mer. _____
_____	T. _____	R. _____	Mer. _____
_____	T. _____	R. _____	Mer. _____
_____	T. _____	R. _____	Mer. _____
_____	T. _____	R. _____	Mer. _____

C1 14-67